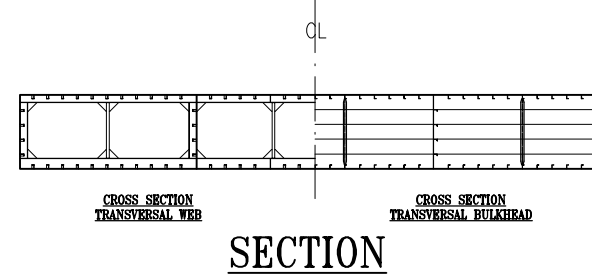
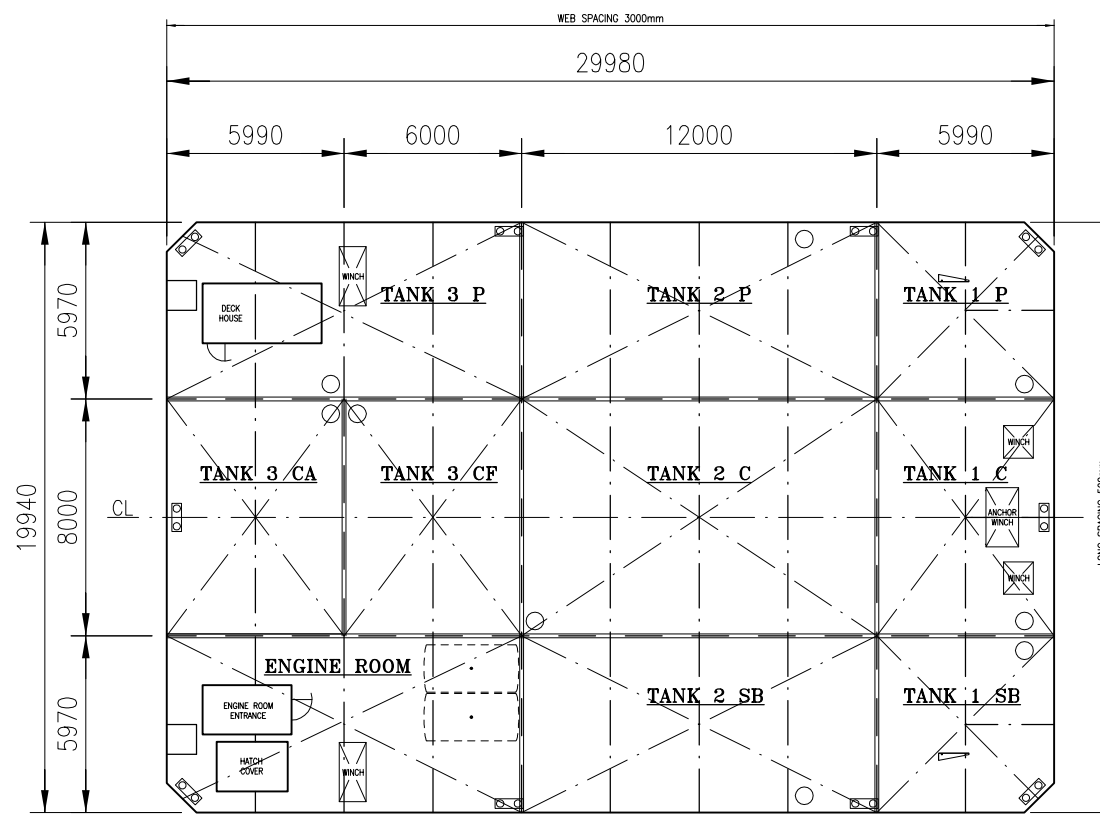
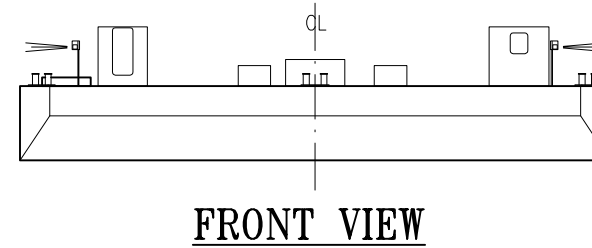
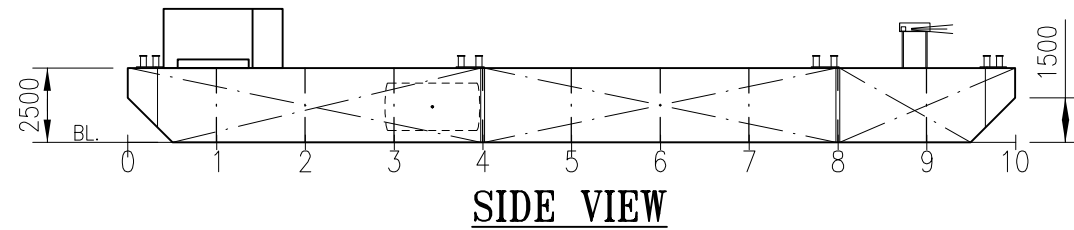


ISSUE	DESCRIPTION	DATE	DRWN	DATE	CHKD
D	LOADING SCALE ADDED	OCT.2009	OLA		



PERMISSIBLE LOADS		
LOAD CASE	MAX. PERM. LOAD	DIM. PART
ANYWHERE ON DECK	1.9 TONNES /m <sup>2</sup>	Longitudinal
EVEN DISTRIBUTION: TRV. WEB	5.4 TONNES /m.	Web
EVEN DISTRIBUTION: BULKHEAD	27.1 TONNES /m.	Weld
POINT LOAD: ON DECK	1.7 TONNES **	Plate thickness
POINT LOAD: ANYWHERE ON WEB	8.1 TONNES **	Weld *
POINT LOAD: ANYWHERE ON BULKHEAD	8.1 TONNES **	Weld *
POINT LOAD: BULKHEAD/ WEB	32.5 TONNES **	Weld *
POINT LOAD: BULKHEAD/ BULKHEAD	32.5 TONNES **	Weld *

\* = WELD: Between deck & bulkhead: a=4 mm  
Between deck & longitudinal: a=4 mm  
Between deck & web: a=4 mm

\*\* = ASSUMED PRINT: 300x300mm.  
 EVERY OTHER LOADCASE TO BE CONSIDERED SPECIALLY.

○ =TANK OPENING

**MAIN DIMENSIONS:**

**LENGTH OVER ALL:** 29,98 m  
**BREADTH MOULDED:** 19,94 m  
**DEPTH MOULDED:** 2,50 m

**”HIGH LIFT”**  
 CALL SIGN: SETI

DRAUGHT IN METRES TO B.L.	KM+ IN METRES ABOVE B.L.	FREE-BOARD IN METRES	LOADING SCALE-HIGH LIFT		
			DEADWIGHT IN TONNES AT 1000 KG IN FRESH WATER $\rho=1,000$	DEADWIGHT IN TONNES AT 1000 KG IN BRACKISH WATER $\rho=1,025$	DEADWIGHT IN TONNES AT 1000 KG IN SALT WATER $\rho=1,025$
2.4		0.2	1200	1200	
2.2	16.5	0.4	1100	1100	
2.0	18.0	0.6	922	922	
1.8	19.9	0.8	800	800	
1.6	22.2	1.0	700	700	
1.4	25.3	1.2	600	600	
1.2	28.8	1.4	500	500	
1.0	34.3	1.6	400	400	
0.8	42.7	1.8	300	300	
0.6	56.7	2.0	200	200	
0.4	83.5		100	100	
0.2			0	0	
BL					

Summer draught 1,884 m


0,624m

DECK LINE

Summer draught 1,884 m

LIGHT SHIP WEIGHT 204 tonnes

CAPACITIES OF WATER BALLAST TANKS					
TANK No.	VOLUME m <sup>3</sup>	LCG fr. L/2 m	VCG fr. BL m	TCG fr. CL m	MOM. OF INERT. m <sup>4</sup>
1 SB WB	83.99m <sup>3</sup>	11.81	1.31	6.98	104.9
1 C WB	112.78m <sup>3</sup>	11.83	1.31	0	256.0
1 P WB	83.98m <sup>3</sup>	11.81	1.31	-6.98	104.9
2 SB VOID	180.72	3.0	1.255	7.00	216.0
2 C VOID	240.96	3.00	1.255	0	512
2 P VOID	180.72	3	1.255	-7.00	215.0
3 S ENGINE ROOM	174.52	-8.803	1.279	6.991	212.4
3 P VOID	174.52	-8.803	1.279	-6.991	212.4
3 C F	120.48 m <sup>3</sup>	-6.0	1.26	0	256.0
3 C A	112.79 m <sup>3</sup>	-11.83	1.31	0	256.0



**Sandinge Bogsering & Sjötransport**  
 Skäl Hedarna 166 SE-453 92 Lysekil Sweden  
 Tel. +46 (0)523 66 07 45 Fax. +46 (0)523 66 07 22  
 E-mail: info@sandinge.com Web: www.sandinge.com

YARD:	DATE: 2008-07-09	DATE: 2008-07-09	SCALE: 1:250 (A3)
	DRAWN: CA	CHECKED: PH	
<b>HIGH LIFT CAPACITY PLAN</b>			
DWG NO. 08254-1-152-01	SHEET: 1	NO. OF SHEETS: 1	ISSUE: D