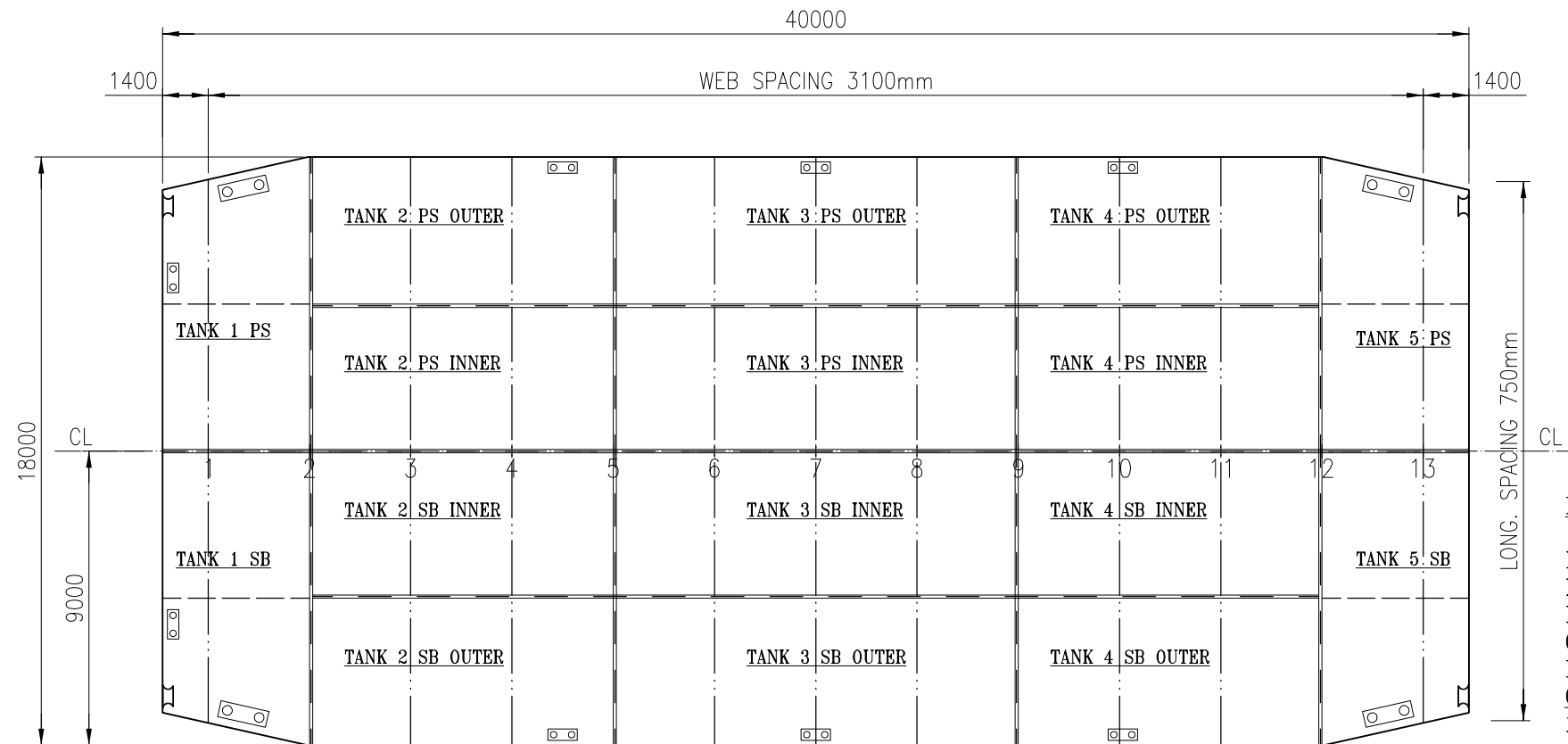


SIDE VIEW

PERMISSIBLE LOADS		
LOAD CASE	MAX. PERM. LOAD	DIM. PART
ANYWHERE ON DECK #2-#12	9,8 TONNES /m2	Bending, web
ANYWHERE ON DECK #0-#2, #12-#14	9,3 TONNES /m2	Bending, long.
EVEN DISTRIBUTION: TRV. WEB	30 TONNES /m.	Bending
EVEN DISTRIBUTION: BHD.	50 TONNES /m.	Buckling
POINT LOAD: ANYWHERE ON DECK	2,1 TONNES **	Plate thickness
POINT LOAD: ANYWHERE ON WEB	24 TONNES **	Weld
POINT LOAD: ANYWHERE ON BULKHEAD	24 TONNES **	Weld
POINT LOAD: BULKHEAD/ WEB	48 TONNES **	Weld
POINT LOAD: BULKHEAD/ BULKHEAD	48 TONNES **	Weld

**** = ASSUMED PRINT: 300x300mm.
EVERY OTHER LOADCASE TO BE CONSIDERED SPECIALLY.**



MAIN DECK

MAIN DIMENSIONS:

LENGTH OVER ALL: 40,00 m
 BREADTH MOULDED: 18,00 m
 DEPTH MOULDED: 2,48 m
 GROSS: 444 GT
 NET: 133 NT
CARGO CAPACITY:
 1012 tonnes int. freeboard
 1100 tonnes nat. freeboard III
 1200 tonnes nat. freeboard II

"ROLINA"
 CALL SIGN: SGUZ

DRAUGHT IN METRES TO B.L.	KM ³ IN METRES ABOVE B.L.	FREE-BOARD IN METRES	DEADWIGHT IN TONNES AT 1000 KG		
			IN FRESH WATER (ρ=1,000)	IN BRACKISH WATER (ρ=1,025)	IN SALT WATER (ρ=1,025)
2.4					
2.2		0.2			
2.0	15.2	0.4	1100		1100
1.8	16.6	0.6	1012		1012
1.6	18.6	0.8	900		900
1.4	21.1	1.0	800		800
1.2	24.3	1.2	700		700
1.0	28.8	1.4	600		600
0.8	35.5	1.6	500		500
0.6	46.8	1.8	400		400
0.4	69.5	2.0	300		300
0.2		2.2	200		200
			100		100
			0		0
			0		0

LIGHT SHIP WEIGHT: 260 tonnes

CAPACITIES OF WATER BALLAST TANKS					
TANK No.	VOLUME m ³	LCG fr. L/2	VCG fr. BL	TCG fr. CL	TRV MOM. OF INERTIA
5 PS & 5 SB	70 m ³ EACH	17,38	1,47	± 4,25	233
4 PS & SB OUTER	102 m ³ EACH	10,85	1,24	± 6,75	71
4 PS & SB INNER	102 m ³ EACH	10,85	1,24	± 2,25	71
3 PS & SB OUTER	136 m ³ EACH	0	1,24	± 6,75	94
3 PS & SB INNER	136 m ³ EACH	0	1,24	± 2,25	94
2 PS & SB OUTER	102 m ³ EACH	-10,85	1,24	± 6,75	71
2 PS & SB INNER	102 m ³ EACH	-10,85	1,24	± 2,25	71
1 PS & 1 SB	70 m ³ EACH	-17,38	1,47	± 4,25	233

C	LOADING SCALE ADDED	OCT.2009	OLA
ISSUE:	DESCRIPTION:	DATE:	SIGN:
 Sandinge Bogsering & Sjötransport Skal Hedarna 166 SE-453 92 Lysekil Sweden Tel. +46 (0)523 66 07 45 Fax. +46 (0)523 66 07 22 E-mail: info@sandinge.com Web: www.sandinge.com	YARD:	DATE: 020207	CHECKED:
	DRAWN: PHE	SCALE: 1:200 (A3)	
TITLE: ROLINA CAPACITY PLAN		DWG NO. 02228-152-1	ISSUE: C