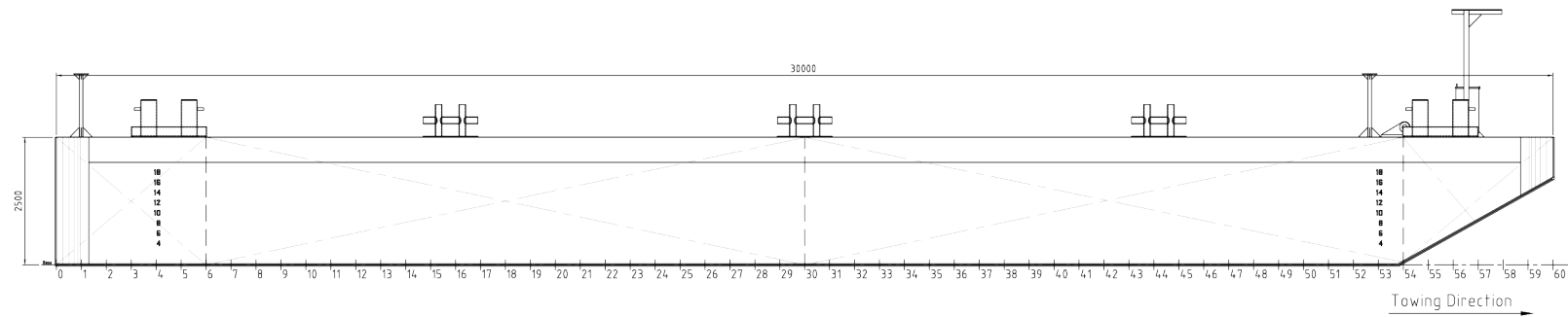
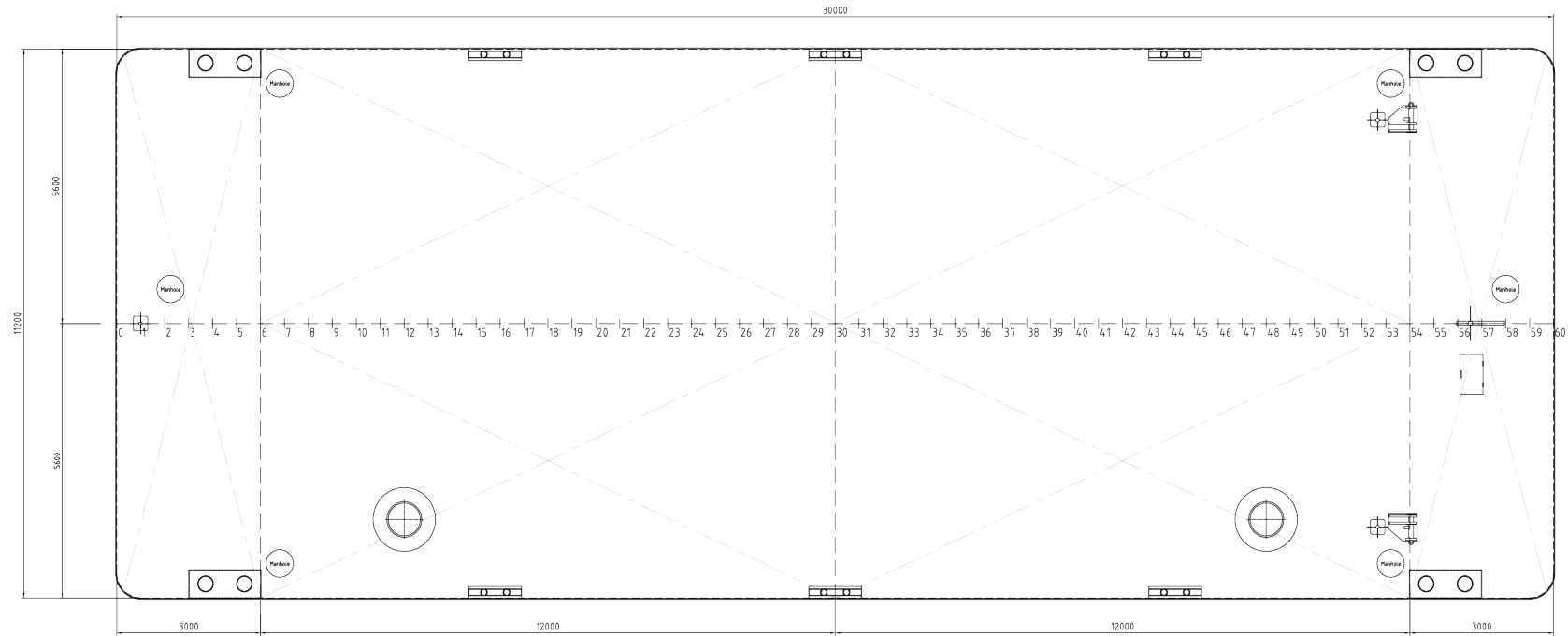


REV.	DATE	DRWN	CHKD	APPRD	REMARK
A	20200122	UIT			Ballards added - Misc. Equipment



**MAIN DIMENSIONS:**  
 LENGTH o.a. 30,00 m  
 LENGTH waterline 30,00 m  
 LENGTH rule (97% waterline length) 29,10 m  
 BREADTH mid 11,20 m  
 DEPTH mid 2,50 m  
 DRAUGHT Scantling 1,95 m  
 Top of airpipes assumed to be located 160 mm above deck.

Towing condition in heavy water only at low speed  
 DECKLOAD Maindeck 6,0 t/m  
 Max Bending Moment at sea  
 Sagging - 2528 kNm  
 Hogging - 5533 kNm  
 CLASSIFICATION  
 BUREAU VERITAS HULL - Pontoon  
 UNRESTRICTED NAVIGATION

**MATERIAL**  
 MATERIAL GRADE A (Steel min Yield 235n/mm<sup>2</sup>)  
 The weld details to Surveyor Satisfaction

Spuds for mooring only  
 Note: Optional spudpole  $\varnothing$ 610mm

**PRÄMKOMPANIET AB**  
 Bopparing - Prämattymning - Isbrytning

Skal Hedarna 166  
 453 92 Lysekil  
 SWEDEN  
 www.pramkompaniet.se

**"EBBA"**  
 Call Signal: SCBK.

NAME	SCALE	DATE	PROJECTION	SHEET
General Arrangement Pontoon 30x11.2x2.5 6 t/m <sup>2</sup>	1:50	2021		1 of 1
CHECKED BY:	DRWN:	APPD:	REV:	A
DRWN BY: NMS	DRWN/APPD: A1			

COPYRIGHT RESERVED ACC. LAW