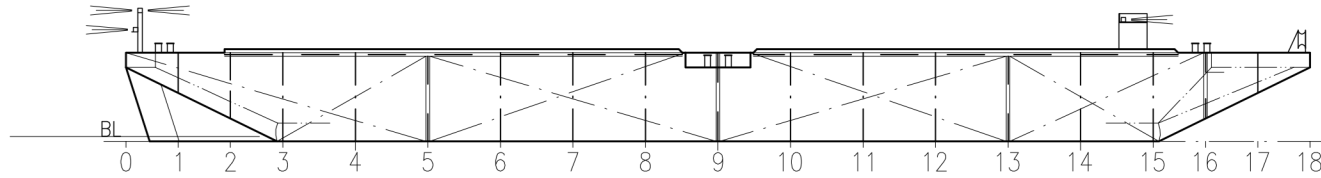
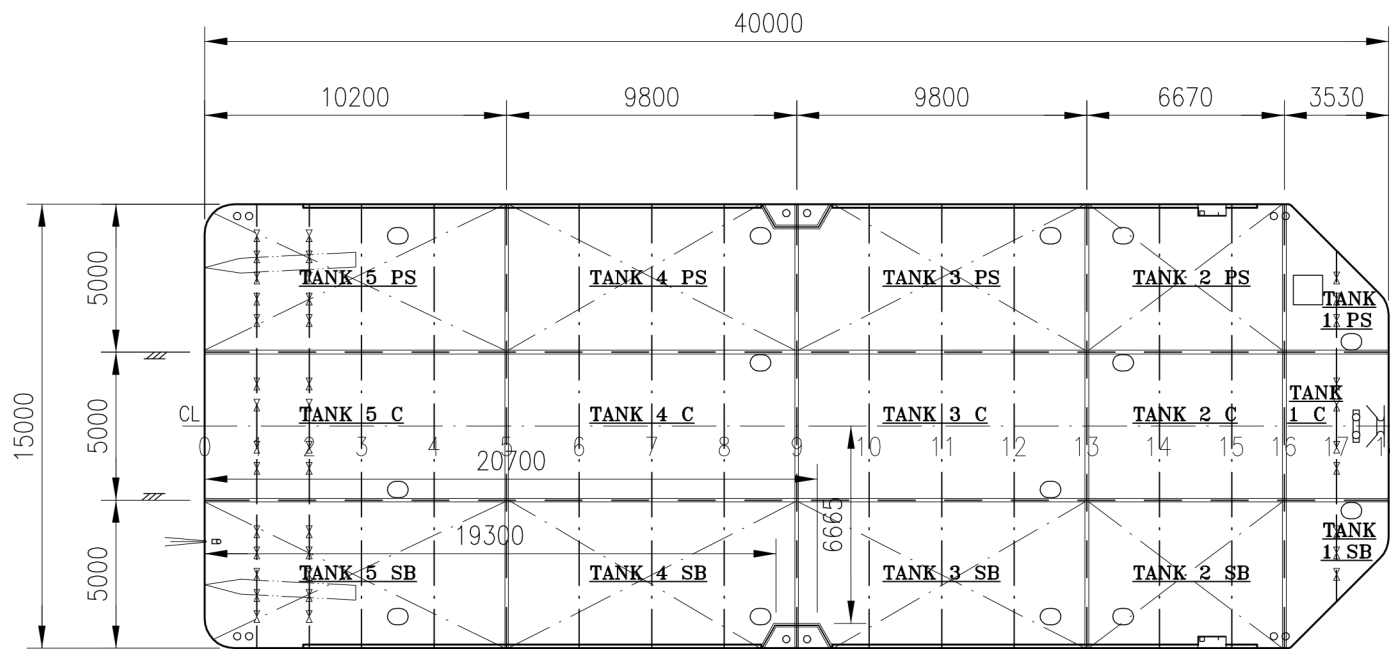


TRV SECTION



SIDE VIEW



MAIN DECK

| ISSUE | DESCRIPTION | DATE | DRWN | DATE | CHKD |
|-------|---------------------|----------|------|------|------|
| B | LOADING SCALE ADDED | OCT.2009 | OLA | | |

| PERMISSIBLE LOADS | | |
|-----------------------------------|----------------------------|-----------------|
| LOAD CASE | MAX. PERM. LOAD | DIM. PART |
| ANYWHERE ON DECK | 5.2 TONNES /m ² | Longitudinal |
| EVEN DISTRIBUTION: TRV. WEB | 12.9 TONNES /m. | Web |
| EVEN DISTRIBUTION: TRV. BULKHEAD | 23.9 TONNES /m. | Buckling |
| EVEN DISTRIBUTION: LONG. BULKHEAD | 7.0 TONNES /m. | Buckling |
| POINT LOAD: ON DECK | 3.2 TONNES ** | Plate thickness |
| POINT LOAD: ANYWHERE ON WEB | 35.0 TONNES ** | Weld * |
| POINT LOAD: ANYWHERE ON BULKHEAD | 17.1 TONNES ** | Buckling |
| POINT LOAD: BULKHEAD/ WEB | 70.0 TONNES ** | Weld * |
| POINT LOAD: BULKHEAD/ BULKHEAD | 81.6 TONNES ** | Weld * |

* = WELD: Between deck & bulkhead: a=7-8 mm
Between deck & longitudinal: a=6 mm
Between deck & web: a=6 mm

** = ASSUMED PRINT: 300x300mm.
EVERY OTHER LOADCASE TO BE CONSIDERED SPECIALLY.

| DRAUGHT IN METRES TO B.L. | KM ³ IN METRES ABOVE B.L. | FREE-BOARD IN METRES | DEADWEIGHT IN TONNES AT 1000 KG | | |
|---------------------------|--------------------------------------|----------------------|---------------------------------|---------------------------|-----------------------|
| | | | IN FRESH WATER δ=1,000 | IN BRACKISH WATER δ=1,025 | IN SALT WATER δ=1,025 |
| 2.8 | | 0.2 | 1150 | 1150 | 1150 |
| 2.6 | 9.2 | 0.4 | 1100 | 1100 | 1100 |
| 2.4 | 9.7 | 0.6 | 1005 | 1005 | 1005 |
| 2.2 | 10.4 | 0.8 | 900 | 900 | 900 |
| 2.0 | 11.2 | 1.0 | 800 | 800 | 800 |
| 1.8 | 12.2 | 1.2 | 700 | 700 | 700 |
| 1.6 | 13.1 | 1.4 | 600 | 600 | 600 |
| 1.4 | 14.7 | 1.6 | 500 | 500 | 500 |
| 1.2 | 17.0 | 1.8 | 400 | 400 | 400 |
| 1.0 | 20.1 | 2.0 | 300 | 300 | 300 |
| 0.8 | 24.7 | | 200 | 200 | 200 |
| 0.6 | 32.1 | | 100 | 100 | 100 |
| 0.4 | 47.7 | | 0 | 0 | 0 |

Summer draught 2,412 m

DECK LINE

0,600m

LIGHT SHIP WEIGHT 285 tonnes

MAIN DIMENSIONS:

LENGTH OVER ALL: 40,0m
BREADTH MOULDED: 15,0m
DEPTH MOULDED: 3,0m

"FARAO"
CALL SIGN: SMOP

CAPACITIES OF WATER BALLAST TANKS

| TANK No. | VOLUME m ³ | LCG fr. L/2 m | VCG fr. BL m | TCG fr. CL m | MOM. OF INERT. m ⁴ |
|--------------|-----------------------|---------------|--------------|--------------|-------------------------------|
| 1 SB/PS VOID | 15.6 m ³ | 17.62 | 2.20 | +/-4.29 | - |
| 1 C VOID | 23.5 m ³ | 17.86 | 2.21 | 0.0 | - |
| 2 SB/PS WB | 94.2 m ³ | 13.04 | 1.53 | +/-4.97 | 69.5 |
| 2 C VOID | 95.4 m ³ | 13.06 | 1.52 | 0.0 | - |
| 3 SB/PS WB | 142.5 m ³ | 4.90 | 1.50 | +/-4.98 | 102.1 |
| 3 C VOID | 143.8 m ³ | 4.90 | 1.49 | 0.0 | - |
| 4 SB/PS WB | 142.5 m ³ | -4.91 | 1.50 | +/-4.99 | 102.1 |
| 4 C VOID | 143.8 m ³ | -4.90 | 1.49 | 0.0 | - |
| 5 SB/PS WB | 117.8 m ³ | -13.99 | 1.67 | +/-4.99 | 106.3 |
| 5 C VOID | 118.3 m ³ | -14.00 | 1.67 | 0.0 | - |

| | | | | |
|---|-------------------------------|---------------------|---|-----------------------------|
| PRÅMKOMPANIET AB Bogsering - Pråmuthyrning - Isbrytning Skal Hedarna 166 453 92 Lysekil SWEDEN www.pramkompaniet.se | YARD: | DATE: 2006-07-06 | DATE: 2006-01-13 | SCALE: 1:250 (A3) |
| | DRAWN: TK, FR | CHECKED: PH | TITLE: FARAO CAPACITY PLAN | |
| DWG NO. | SHEET: 06221-152-01 | | NO. OF SHEETS: 1 | ISSUE: B |